



8 Connect the USB cable to the black connector on car side as shown in the picture.



9 Put back in place the Radio, Control panel of the clima and the AUX/USB device. This is the final result.

USB + CHARGE  
FUNCTION



CHARGE CAPABILITY  
DEPENDING ON THE  
HEAD UNIT



ONLY CHARGE  
FUNCTION



MAX 2.1 A

AUX/USB replacement installation kit for:

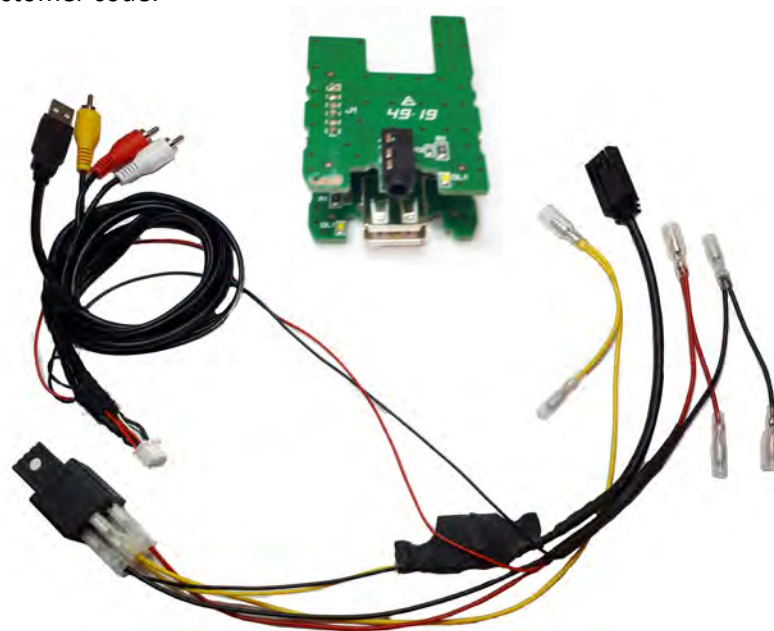
# JEEP

Model: Compass;

Year: 2018>

Kit content: AUX/USB replacement PCB;

Customer code:





1 Carefully take out the OEM radio, control panel of the clima and the USB/AUX device. For more details about the disassembly operations please refer to the complete installation kit manual.



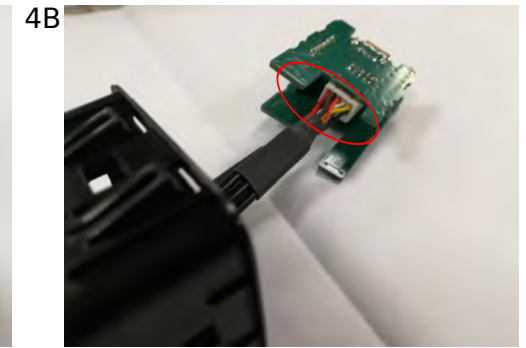
2 Remove the Black plastic part shown in the picture and install it again on the USB component of the PCB Interface supplied in the kit.



3 Remove the OEM PCB interface from the OEM plastic box. Cut on the back of the OEM plastic box following the red dotted lines while remaining as close as possible to the side of the red vertical line as shown in the picture by creating a hole of about 15x10mm.



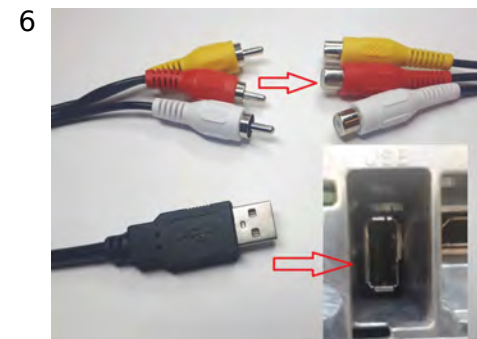
4 Pass the white connector through the hole and connect it to the PCB interface supplied in the kit.



5 Install the supplied PCB interface as shown in the picture.



6 Connect the cable to the radio side as shown in the picture.



7 Connect the 3 wires shown in the picture to the power cable as explained below:  
 - BLACK wire (GND) => BLACK wire  
 - YELLOW wire (+30) => +12V PERMANENT YELLOW WIRE  
 - RED wire (+15) => +12V SWITCHED ACC RED WIRE.