

Bluetooth® Software Update Manual for Windows 7

Applicable from 2012 products
CDE-13xBT & CDE-W235BT & CDA-137BTi



ALPINE ELECTRONICS GmbH
Wilhelm-Wagenfeld-Straße 1-3,
80807 München, Germany
Phone 089-32 42 640

ALPINE ELECTRONICS OF U.K., LTD.
Alpine House
Fletchamstead Highway, Coventry CV4 9TW, U.K.
Phone 0870-33 33 763

ALPINE ELECTRONICS FRANCE S.A.R.L.
(RCS PONTOISE B 338 101 280)
98, Rue de la Belle Etoile, Z.I. Paris Nord II,
B.P. 50016, 95945 Roissy Charles De Gaulle
Cedex, France
Phone 01-48638989

ALPINE ITALIA S.p.A.
Viale C. Colombo 8, 20090 Trezzano
Sul Naviglio (MI), Italy
Phone 02-484781

ALPINE ELECTRONICS DE ESPAÑA, S.A.
Portal de Gamarra 36, Pabellón, Pabellón, 32
01013 Vitoria (Alava)-APDO 133, Spain
Phone 945-283588

Introduction

This manual describes the steps required for updating the Head Units Bluetooth firmware. Read all warnings and steps carefully before performing the update.

Improvements

The update improves the following points:

- Compatibility with new mobile phones.
- Bluetooth performance
- The Head Units compatibility will be improved from AVRCP1.3 to AVRCP1.4
- Compatibility with new mobile phones.
- iOS6 Bluetooth Audio - displaying the tag information on the Head Unit
- iOS6 Bluetooth Audio - ability to control the iPhone 's music player from the Head Unit

Requirements

- A Windows 7 computer with Bluetooth connectivity. This includes built-in Bluetooth adapters or external USB Bluetooth adapters.
- The Bluetooth adapter must support File Transfer Profile (FTP).
- The Bluetooth firmware update file (Alpine provided).
- An internet connection during pairing process (automatic driver download)
- **Freeware program "Medieval Bluetooth OBEX File Transfer"** to transfer the update file to the head unit. The link to download the program → <http://www.medieval.it/blueftp-pc/menu-id-70.html>

Caution



- **Do NOT update the Bluetooth firmware while driving.**
- **Do NOT turn off the vehicle or remove power from the Head Unit while the unit is updating.** The update will not be performed correctly and the Head Unit may be damaged.

Notice

- **Updating will result in all user information being deleted, including user settings, paired devices, and phonebook contacts.**
- **Please contact Alpine Technical Support of your country with any questions concerning the update process.**

Bluetooth Firmware Update Instructions

The Bluetooth firmware update procedure uses a Bluetooth feature known as File Transfer Profile (FTP) to wirelessly transfer the update file from the PC to the Head Unit. This manual describes the update process performed using the Windows 7 operating system (Broadcom Bluetooth Stack and Microsoft Bluetooth Enumerator).

Downloading the Bluetooth Firmware Update

Go to the Alpine homepage of your region to download the Bluetooth firmware update file to the computer that will be used to perform this update. You can find it at your local Alpine website at www.alpine-europe.com

Head Unit Setup Buttons Illustration

The illustration shows the buttons that shall be used during the updating procedure. This illustration is based on the CDE-133BT model. The button locations will be different on **some models**. Please refer to the owner's manual for your specific model.



1. Preparing the Bluetooth Connection



WARNING – Do not update the Bluetooth firmware while driving

- 1 Turn ON the Head Unit by setting the vehicles ignition to the Accessory (ACC) position.
- 2 Confirm that the Head Units Bluetooth Hands-free and Audio Streaming connections are enabled.
 - a) Enable Hands-free by pressing and hold the **AUDIO/SETUP** button for at least 2 seconds then release.
 - b) Use the rotary encoder to select **"BLUETOOTH"** > **Q ENTER** > **"BT IN"** > **Q ENTER** > **"HFP"** > **Q ENTER** > **"ON"** > **Q ENTER** (Fig. 1).



The Head Unit will return to the "HFP" screen (Fig. 2).




- c) Enable Audio Streaming by using the rotary encoder to select **"AUDIO"** > **Q ENTER** > **"ON"** > **Q ENTER** (Fig.3).





The Head Unit will return to the **"Audio"** screen (Fig. 4).



- d) Press the  button to return to the setup menu in which **"BT IN"** is displayed (Fig. 5)



3 Confirm that the Head Units Bluetooth visible mode is ON.

a) Use the rotary encoder to select "VISIBLE M" >  ENTER > "VISI M ON" >  ENTER (Fig. 6).




(Fig. 6)

The Head Unit will return to the "VISIBLE M" screen (Fig. 7).





(Fig. 7)

4 Confirm that no devices are paired to the Head Unit.

a) Use the rotary encoder to select "PAIRED DEV" >  ENTER (Fig.8)



(Fig. 8)

b) Use the rotary encoder to select the paired device then press  ENTER > "CLEAR" >  ENTER (Fig. 9). In this example the paired device name is ALPINE.



(Fig. 9)

"NO DEV" will be displayed after the device is cleared (Fig 10).




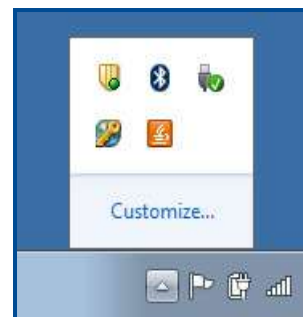
(Fig. 10)

c) Repeat step 4 to clear any additional devices.

5 Turn the Head Unit OFF then ON by setting the vehicles ignition to the OFF (LOCK) position then back to the Accessory (ACC) position.


6 Power ON the computer.

7 Confirm that the Bluetooth Adapter is turned on or plugged into the computer. The Bluetooth icon  or a similar notification should be displayed on the task bar when the adapter is enabled (Fig. 11).



(Fig. 11)

2. Creating a Bluetooth Pairing between the PC and Head Unit

- 1 From the Windows 7 task bar select "Start"  > "Control Panel" > "Devices and Printers" (Fig. 12).



(Fig. 12)

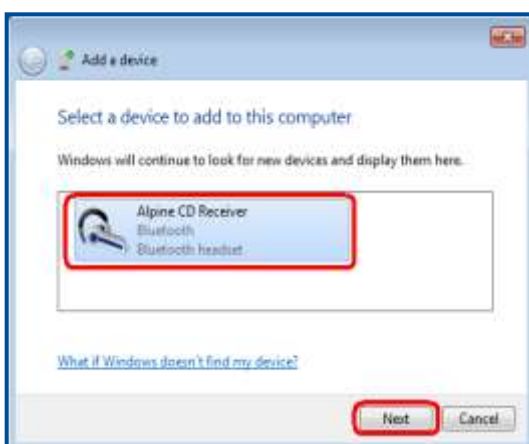
- 2 Select "Add a Device" (Fig. 13).



(Fig. 13)

The "Add a device" window will open and Windows will start to search for devices (Fig. 14).

- 3 Select the device "Alpine CD Receiver" in the "Add a device" window (Fig. 14).



(Fig. 14)

- 4 Select "Next" on the "Add a new device" window to start the pairing (Fig. 14).

- 5 The Head Unit will immediately display "PAIRING" followed by "PAIR NO" (Fig. 15).



- 6 Turn the rotary encoder to select "PAIR YES" then press ENTER (Fig. 16).



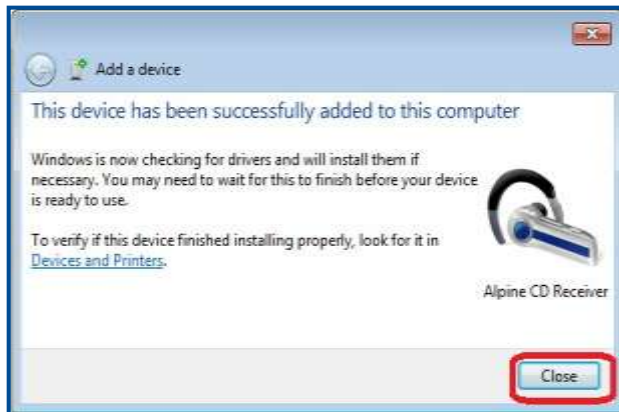
"CONNECTING" will start to flash on the Head Unit (Fig. 17).



- 7 Wait a few moments until "CONNECTED" is displayed on the Head Unit (Fig. 18). This indicates that the Bluetooth connection is successful paired.

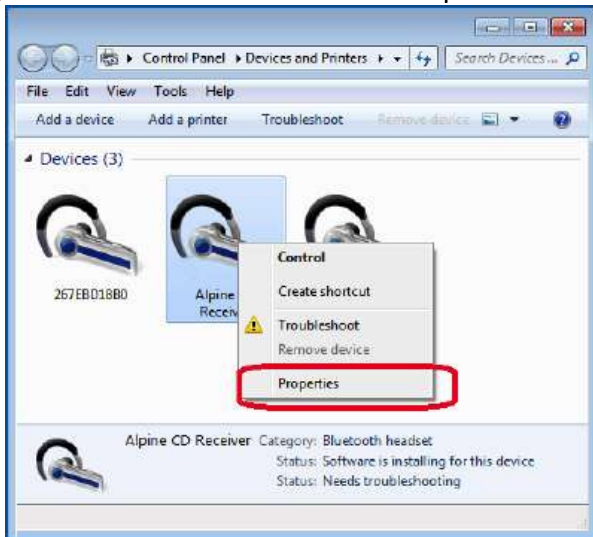


- 8 Select **Close** on the "Add a device" window (Fig. 19).



- 9 Return to the "Devices and Printers" window.

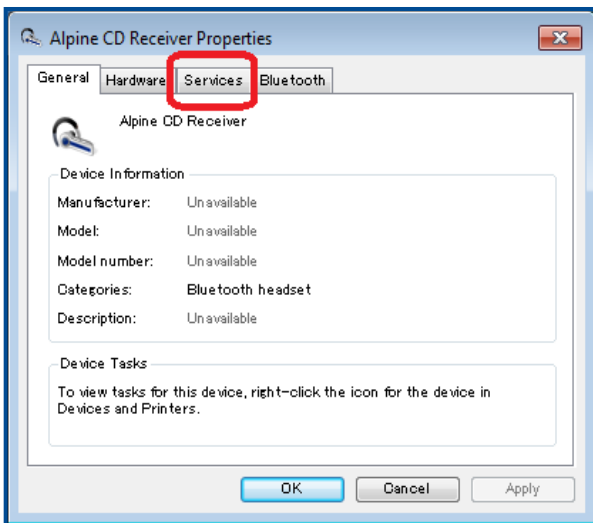
- 10 Right click on the device named "Alpine CD Receiver" then select "Properties"(Fig. 20)



(Fig. 20)

If the window was closed select **Start > Control Panel > Devices and Printers**.

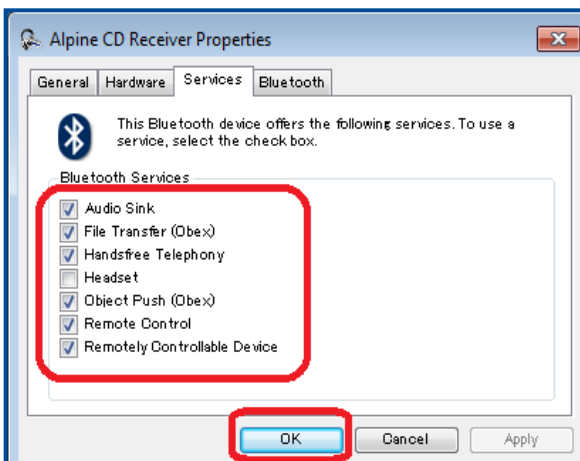
- 11 The Alpine CD Receiver Properties window will open (Fig. 21).



Select the "Services" tab (Fig. 21).

(Fig. 21)

- 12 Confirm that "Headset service" is NOT checked and that all other services are checked, as displayed below (Fig. 22).



(Fig. 22)

- 13 Select **"APPLY"** and then "OK" to accept the changes and close Properties window (Fig. 22).

2. Updating the Bluetooth Firmware



WARNING – Do NOT turn off the vehicle or remove power from the Head Unit while the unit is updating. The update will not be performed correctly and the Head Unit may be damaged.

- 1 Double click "**Alpine CD Receiver**" in the "**Devices and Printers**" window to open the Bluetooth Device Control menu (Fig. 23).



(Fig. 23)

- 2 Click on Alpine CD Receiver headset icon in the Bluetooth Device Control window (Fig. 24).



(Fig. 24)

- 3 Select **Disconnect** on the Bluetooth Device Control menu (Fig. 25).



(Fig. 25)

- 4 "(Disconnected)" will be displayed below Alpine CD Receiver (Fig. 26).



(Fig. 26)

- 5 On the Head Unit press and hold the **AUDIO/SETUP** button for at least 2 seconds to open the setup menu.

- 6 Use the rotary encoder to select "BLUETOOTH" > **ENTER** > "FW UPDATE" > **ENTER** (Fig. 27).



- 7 "UPDATE NO" will be displayed on the Head Unit (Fig. 28)



(Fig. 28)

- 8 Turn the rotary encoder to select "UPDATE YES" then press **ENTER** (Fig. 29).



(Fig. 29)

"WAITING" will appear on the display (Fig. 30).



(Fig. 30)

On the computer select "**Connect**" on the Bluetooth Device Control menu (Fig. 31). Finally you have to see the "**Connect**" status. (Fig. 32)

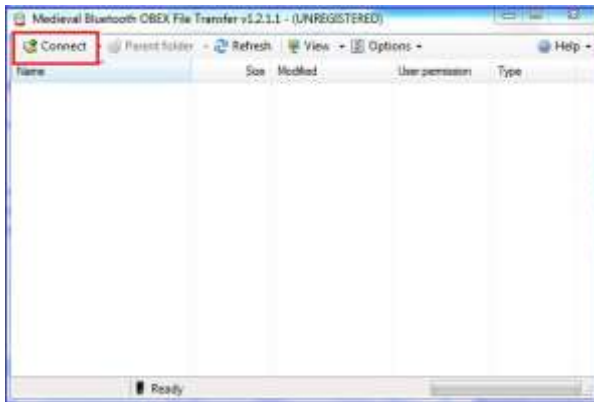


(Fig. 31)



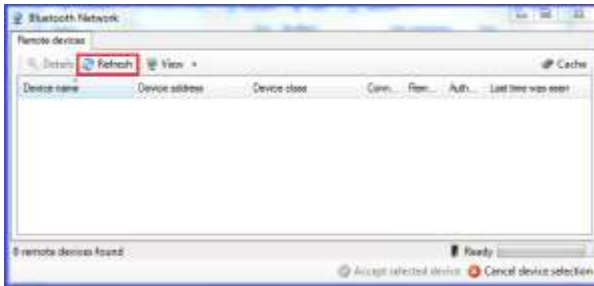
(Fig. 32)

- 9 Open the program OBEX File Transfer which you downloaded and installed before
- 10 Click on the softkey **“Connect”** (Fig 33).



(Fig. 33)

Click on the softkey **“Refresh”** (Fig 34).



(Fig. 34)

- 11 If the unit **“Alpine CD Receiver”** was found click double on it (Fig 35). All three green dots have to displayed.



(Fig. 35)

- 12 Open the folder **“Update”** (Fig 36).



(Fig. 36)

- 13 Drag-and-drop the update firmware file (named: FC6000S_01-63-30.pf) into the "update" folder (which you opened in Step 12) (Fig. 37).



(Fig. 37)

The update file will now be copied to the Head Unit.

Note: The copy process will take approximately 30 seconds to complete. (Fig. 38).



(Fig. 38)



Make sure that the file is copied completely by viewing the copy progress bar on the computer. (Fig. 38)

The Head Unit will display "FIRMWARE UPDATE DON'T TOUCH ANY BUTTON" while the firmware is being updated.



Even though the progress bar is completed after 30 seconds, the update can take up to 5 minutes. Please do not interrupt the update process.

After the update has successfully finished, the Head Unit will display "FIRMWARE UPDATED PLEASE PRESS ANY BUTTON". Push the  button on the Head Unit to exit update mode.

Close the Bluetooth Device Control menu on the computer.

Turn the Head Unit OFF then ON using the vehicles ignition switch. This will finalize the update process.

3. Confirming the update

1 On the Head Unit press and hold the **AUDIO/SETUP** button for at least 2 seconds.

2 Use the rotary encoder to select
"BLUETOOTH" > **Q** ENTER > "FW VERSION" > **Q** ENTER (Fig. 39).



(Fig. 39)

3 Confirm that the version displayed is "01.63.30" (Fig. 39).