



Mobile Media Solutions

NVE-M300P Version 2010/03/18 Software Update Guide



ALPINE ELECTRONICS GmbH
Wilhelm-Wagenfeld-Straße 1-3,
80807 München, Germany
Phone 089-32 42 640

ALPINE ELECTRONICS OF U.K., LTD.
Alpine House
Fletchamstead Highway, Coventry CV4 9TW, U.K.
Phone 0870-33 33 763

ALPINE ELECTRONICS FRANCE S.A.R.L.
(RCS PONTOISE B 338 101 280)
98, Rue de la Belle Etoile, Z.I. Paris Nord II,
B.P. 50016, 95945 Roissy Charles De Gaulle
Cedex, France
Phone 01-48638989

ALPINE ITALIA S.p.A.
Viale C. Colombo 8, 20090 Trezzano
Sul Naviglio (MI), Italy
Phone 02-484781

ALPINE ELECTRONICS DE ESPAÑA, S.A.
Portal de Gamarra 36, Pabellón, Pabellón, 32
01013 Vitoria (Alava)-APDO 133, Spain
Phone 945-283588

Introduction

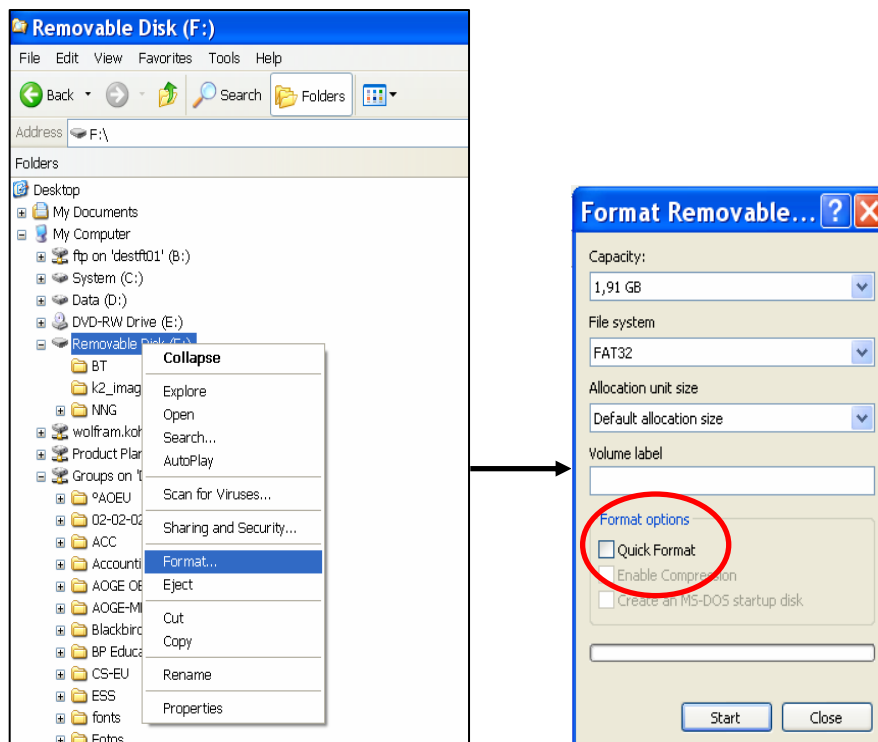
This Guidebook describes the procedure for updating the NVE-M300P software.

Requirements

- ▶ High Speed Internet connection
- ▶ USB stick (minimum 64 MB)

Prepare USB stick - Format USB stick

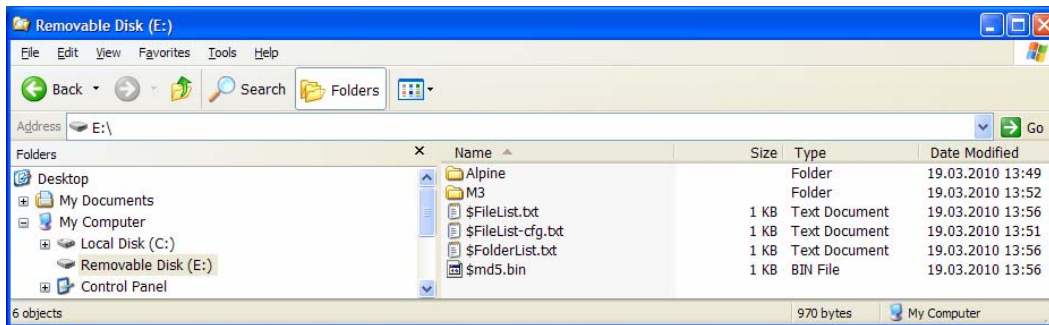
- ▶ Connect the USB stick to the PC.
- ▶ Right click on “Removable Disc”. The Drive name may vary on your PC and click “Format”.
- ▶ Disable “Quick Format” and click “Start”.



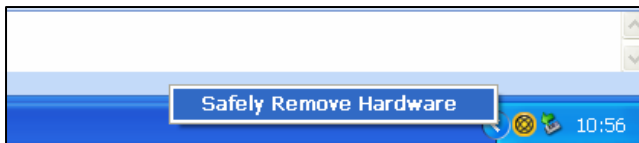
- ▶ Click “OK” after the formatting is completed.

Prepare USB stick - Prepare update image

- ▶ Download the file “FU_NVE-M300P_xxxxxxx.zip” to your PC.
- ▶ Extract the zip file onto the prepared USB stick.
- ▶ The USB stick must contain the following file and folders structure :

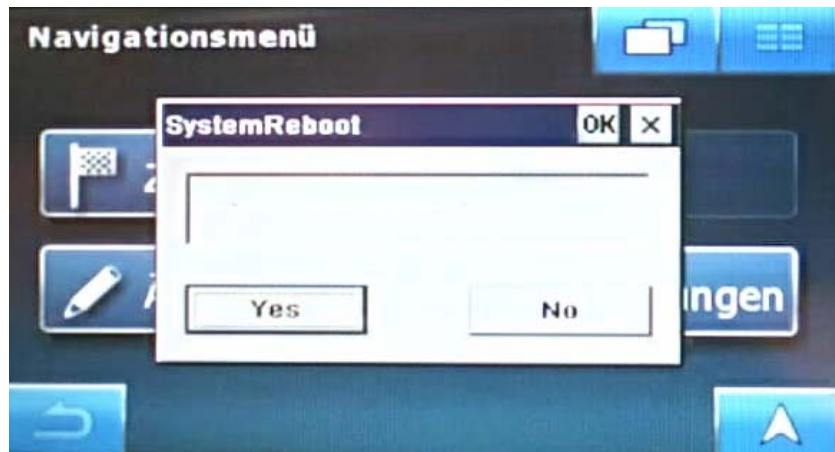


- ▶ Remove the USB stick by selecting “Safely Remove Hardware” on your PC.



Update the NVE-M300P

- ▶ Install and switch-on the navigation system (Monitor with NVE-M300P).
- ▶ Connect the USB stick to the navigation system. Please use the USB cable delivered with the NVE-M300P.
- ▶ The system will reboot automatically after a few seconds.



- ▶ The update will start after the reboot.
- ▶ Please wait until the process bar reached 100%.



- ▶ Disconnect USB stick
- ▶ The system will reboot after one minute.

Initialisation of RUE-M300

- ▶ Connect the USB IR Receiver RUE-M300 to the NVE-M300P via the USB cable delivered with NVE-M300P. Standard USB extension cables can be used if length is not sufficient.
- ▶ To activate RUE-M300, press any button at the remote controller except the TMC button. After this initialisation the RUE-M300 Remote Controller is ready for use.

Verify update process

- ▶ To verify the update process please select Main Menu - Settings - About
- ▶ Compare version number and release date.



- ▶ The file "Update.log.txt" stored on the USB stick during the update process shows details about the update process (success / failure).